

GOVERNMENT OF INDIA
RESEARCH, DESIGNS & AND STANDARDS ORGANISATION
Manak Nagar , Lucknow-226011

Ref: EL/3.1.3/E7

August, 1977

MODIFICATION SHEET NO. RDSO/WAM4/48

1. Title of modification

Modified air connection between RDJ and QPDJ in DJ circuit.

2. Application to class of Locomotives:

WAM4 and WCAM 1 locomotives

3. Object of Modification:

In the existing arrangement for connecting the hose pipe between RDJ and QPDJ on WAM4/WCAM1 locos, the hose pipe is prone to slip from the nipple ends, resulting in line failure of the locomotives. To overcome the problem it is proposed to replace the existing nipple (with one holding collar) by a modified nipple of longer length with two collars and a modified clamping arrangement for the hose pipe.

4. Modification Drawing No:

RDSO SKEL No. 2354 and SKEL 2700

5. Agency for Modification:

Railways : All existing locomotives. Chittaranjan Locomotives Works:
Locomotives under production.

6. (a) Material required and Specification :

Modified nipples (two nos.) as per drawing No. SKEL 2354

Additional Hose pipe fixing clamps- 4 nos.

Note : While carrying out this modification, the air-hose should be reduced if more than 2 years old or if condition is not entirely satisfactory, use Air-Hose to IS:446 type 3; Nominal bore 20 mm.

(b) Material rendered surplus:

Existing Nipples and clamps

7. Work to be carried out:

The existing nipples, connecting the hosepipe between RDJ and QPDJ, are to be replaced by the modified ones with an increased length and having two collars. The nipple should be cleaned thoroughly with emery paper, and given a thin coating of rubber/steel adhesive such as araldite, Dobeckot or

quick fix before pushing rubber hose over it. The hosepipe should then be secured at each end by two clamps as shown in SKEL. 2700.

8. **Reference:**

Central Railway's Drawing No.
D.E.E./TRS/M19, Central Railway , Bombay VT.

9. **Distribution:**

Secretary (Elec. Traction), Railway, Board, New Delhi.

General Manager(Electrical),

Central Railway's, Bombay VT

Eastern Railway's, Fairlie Place, Calcutta.

Northern Railway's, Baroda House, New Delhi.

South Eastern Railway's Garden Reach, Calcutta.

Western Railway's, Churchgate, Bombay

Chittaranjan Locomotives Works, Chittaranjan, W.Bengal.

Superintendent Workshop

Eastern Railway, Kancharapara

Dy. Chief Elec. Engineer,

Central Railway, Work shop , Bhusaval

Eastern Railway, Kancharapara

Dy. Chief Elec. Engineer (Design)

Chittaranjan Locomotives Works, Chittaranjan, W.Bengal.

Senior Divisional Elec. Engineer (TRS)

Central Railway, Kalyan

Eastern Railway, Asansol/Mughalsarai

Northern Railway, Kanpur.

South Eastern Railway, Tatanagar/Bhilai

Divisional Elec. Engineer(TRS)

Central Railway, Bhusaval

Northern Railway, Ghaziabad

Western Railway, Baroda (Gujarat)

Dy. Director Insp. (Elec.)/RDSO c/o Chittaranjan Locomotives Works,
Chittaranjan,

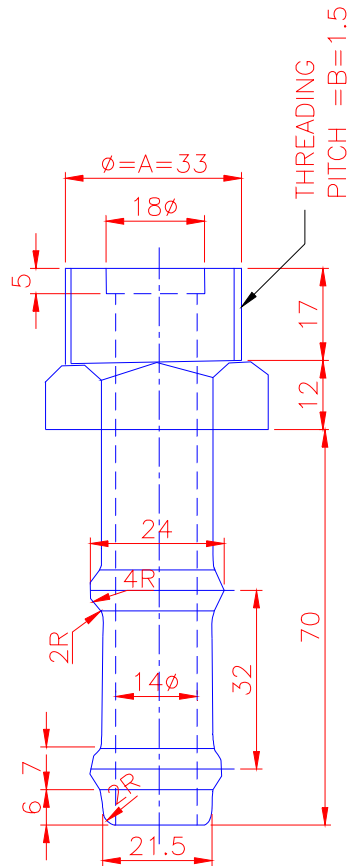
W. Bengal .

(S. Malaviya)

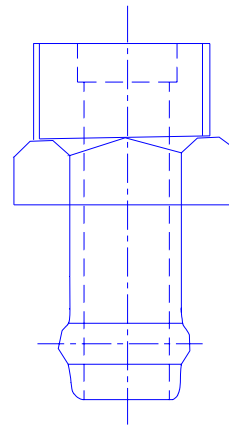
for Director General

(Elec.)

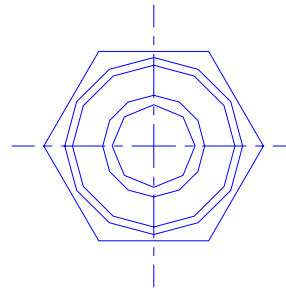
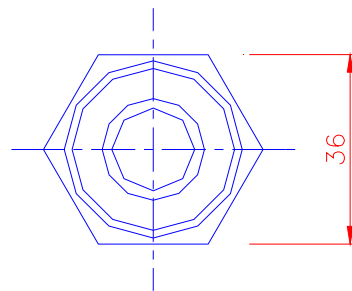
- NOTE :- UNLESS OTHERWISE STATED :-
1. ALL DIMENSIONS ARE IN MILLIMETRES
 2. TOLERANCES AS PER IS: 2102 MEDIUM
 3. MACHINED ALLOVER $\blacktriangledown\blacktriangledown$ IS: 3073
 4. 'A' AND 'B' AS SHOWN OR TO SUIT EXISTING NUTS.



MODIFIED RDJ PIPE NIPPLE



EXISTING RDJ PIPE NIPPLE



1	NIPPLE	2	STEEL IS:226
PART NO.	DESCRIPTION	QTY/ LOCO	MATL/SPEC

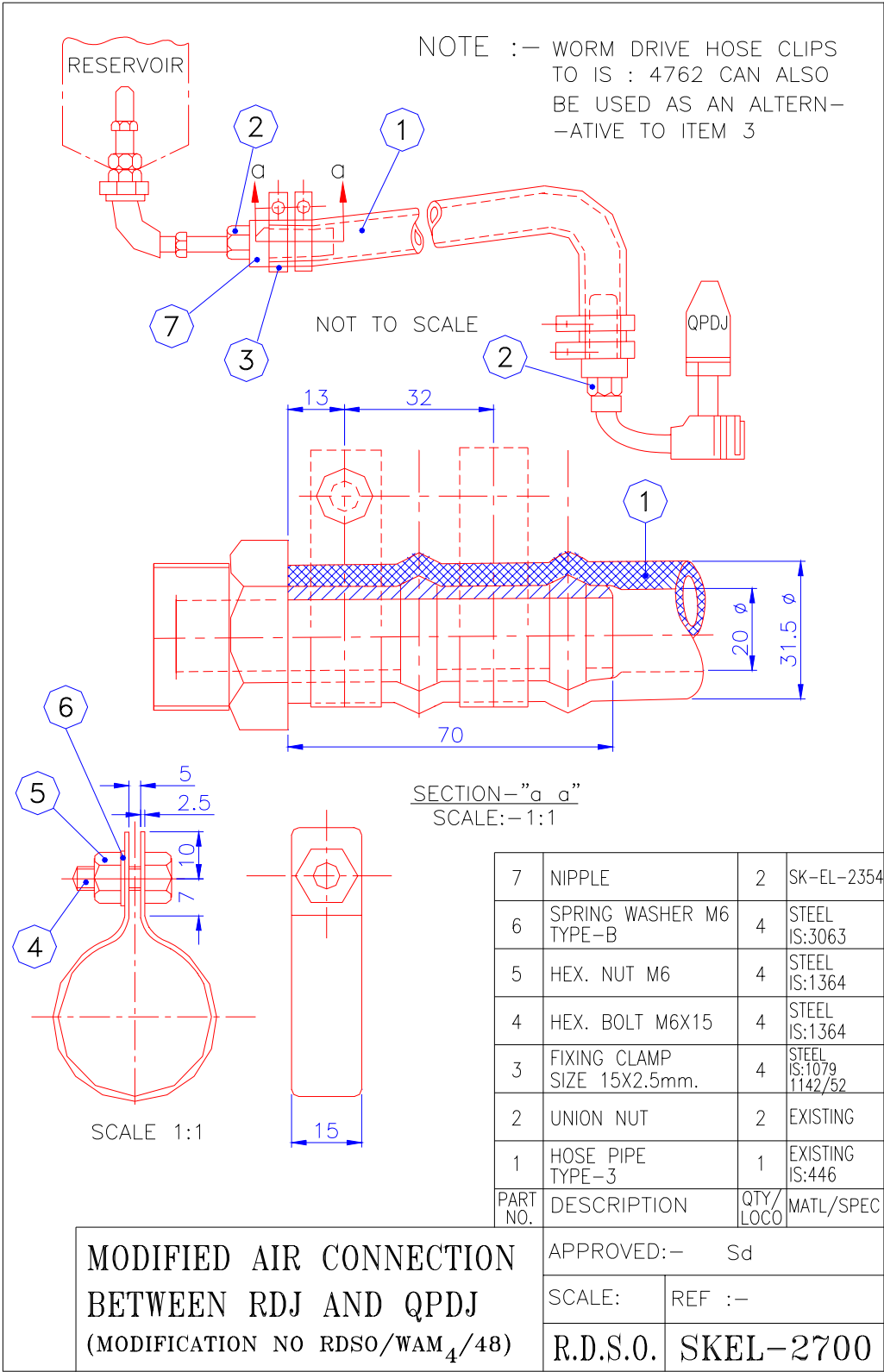
APPROVED:— Sd

SCALE:1:1 REF :-

R.D.S.O. SKEL-2354

MODIFIED NIPPLE

Dt	
D	
T	
C	



Dt	
D	
T	
C	